



# Elmer FEM

open source multiphysical simulation software

## **Template for ElmerGUI Tutorials**

Rich Bayless

August 2, 2022

# Template For ElmerGUI Tutorials

## About this document

This document, Template For ElmerGUI Tutorials, is intended to provide an easy to follow template to create new ElmerGUI tutorials. The present manual corresponds to Elmer software version 9.0. Latest documentations and program versions of Elmer are available (or links are provided) at <http://www.csc.fi/elmer>.

## Copyright information

This document is licensed under the Creative Commons Attribution-NonCommerical 3.0 License. To view a copy of this license, visit <http://creativecommons.org/licenses/by-nc/3.0/>.

Initially this Template For ElmerGUI Tutorials has been written by Rich Bayless. External contributions to the Template are welcome.

## Usage tips

This Template For Tutorials is designed to help make it easy to create a new tutorial using ElmerGUI. Having an outline of a tutorial should allow for simpler development of new tutorials, and will help keep the look and feel of new tutorials in unison with existing tutorials.

Anywhere you see 'zzz', it means that section needs to be replaced. Any text that begins with 'zzz', should be inspected and replaced by the appropriate text for your tutorial. Think of 'zzz' as a place holder where you should 'fill in the blanks'.

After creating and editing a new tutorial tex document, be sure to use 'find' to check that all of the 'zzz' place holders have been found and removed.

The document, TexStart.pdf, is a companion document and includes specific instructions on using Latex to edit Elmer documentation. Be sure to review and use the content of TexStart.pdf.

All of the available ElmerGUI Equation Definition Files (EDFs) are installed during the installation of Elmer.

The EDFs are, by default, located in Linux in:

```
$ELMER_HOME/share/ElmerGUI/edf  
$ELMER_HOME/share/ElmerGUI/edf-extra
```

and in Windows, located in:

```
C:/Program Files/Elmer 9.0-Release/share/ElmerGUI/edf  
C:/Program Files/Elmer 9.0-Release/share/ElmerGUI/edf-extra
```

The New Project screen will automatically locate the EDFs loaded from the above locations. Although it is not needed, if desired you can change which EDFs are loaded from the edf file location and which extra EDFs are loaded from the edf-extra file location. Simply cut and paste any of the edf menu files from one folder to the other. ElmerGUI will then load the files upon start up, and the New Project screen will reflect your choices.

# Contents

<b>Table of Contents</b>	<b>3</b>
<b>1 zzz Template for ElmerGUI Tutorials</b>	<b>4</b>
<b>Index</b>	<b>10</b>

# Tutorial 1

## zzz Template for ElmerGUI Tutorials

**Directory:** Template

**Solvers:** HeatSolve, FlowSolve

**Tools:** ElmerGUI

**Dimensions:** zzz 2D,zzz Transient

**Author:** zzz Rich Bayless

### Introduction

zzz The introduction section should give a general overview of the purpose and the goal of the tutorial, then proceed with the case definition in the next section.

### Case definition

zzz Enter your case definition here.

The geometry for this tutorial looks like as shown in figure 1.1.

zzz Enter your geometry figure here.

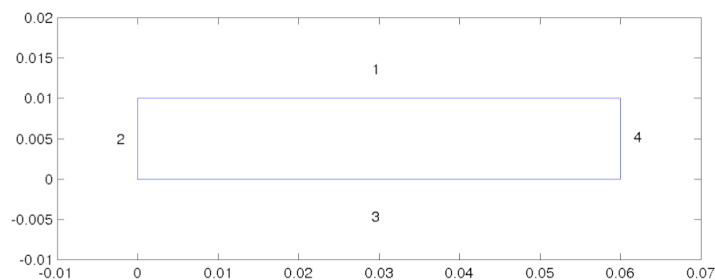


Figure 1.1: Geometry

### Existing Project

The Elmer tutorials consist of the tutorial documentation and the tutorial folders. For example, these ElmerGUI tutorials are described in the document 'ElmerTutorials.pdf' and the working project files are stored under the folder 'tutorials-GUI-files'.

If you need a copy of the folder 'tutorials-GUI-files', it can be downloaded from: <https://www.nic.funet.fi/pub/sci/physics/elmer/doc/>

Each sub-folder under 'tutorials-GUI-files' contains all the files needed to run a particular tutorial, such as the ElmerGUI project file, the geometry input file, and the generated mesh files.

If you wish to just run the existing project tutorial and examine the resulting output, start ElmerGUI and load the existing project file as follows:

```
File
  Load Project...
Run
  Start Solver
```

You should see the Convergence Monitor and the Solver log windows pop up, and the solution finish in a few moments in most cases. The results can then be examined using ElmerVTK, as follow:

```
Run
  Start ElmerVTK
```

Alternatively, one can examine the results using Paraview. For a full introduction about using ElmerVTK or Paraview, refer to the document 'GetStartedElmer', which is useful for both Windows and Linux users.

## New Project

If you are more interested in learning how to use ElmerGUI by constructing an ElmerGUI project from the beginning, then the next few sections will describe in detail the step by step actions needed to build an ElmerGUI project. The first step will be to create your own project folder, and copy in the geometry input file from the tutorial of interest. Then start ElmerGUI and create a new project, as follows:

```
Run
  New Project...
```

Start at the top and select the project directory as shown in Figure 1.2. Then select the Geometry input file, that was copied into your project folder. This could either be an elmer mesh or a geometry input file, such as an elmergrid input file. Lastly, if additional Equation Definition Files are needed for the tutorial, select as many as needed in the right hand box and add them to the left hand box. Finish by clicking on OK.

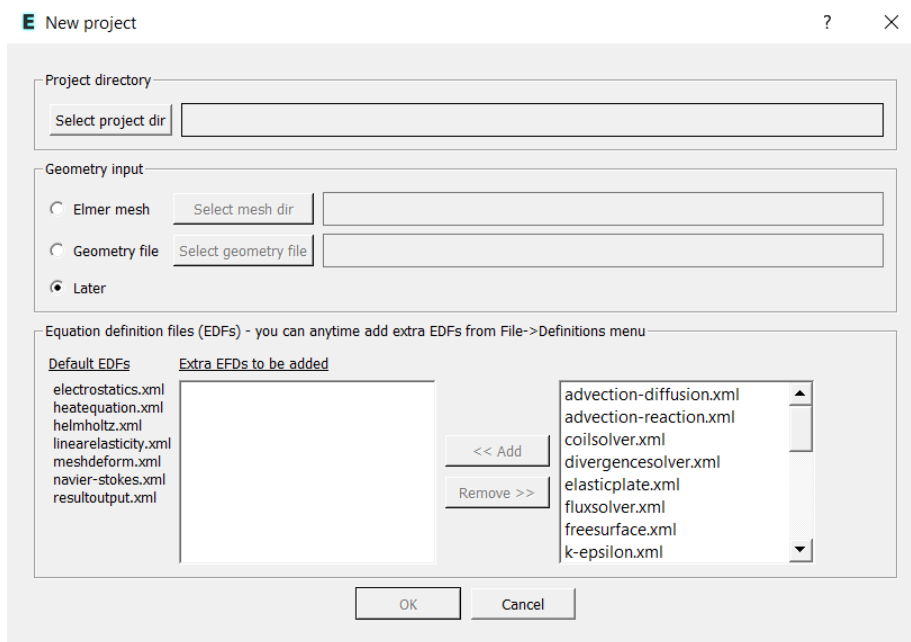


Figure 1.2: New Project

## ElmerGUI Equation Definition Files

The New Project screen automatically locates and lists all of the available EDFs. The left side of the screen lists the Default EDFs, which will be loaded into each ElmerGUI project. The right hand box lists all of the extra EDFs, that are not normally loaded, allowing the option to add individual extra EDFs to a new project.

This tutorial will use the Default EDF, `zzz.xml`, for the zzz Solver. In addition, we will add the Extra EDF, `zzz.xml`, for the zzz Solver. zzz note that one should add multiple EDFs and multiple Solvers, and they will be added to the Index.

## Solution procedure

The input geometry is given in ElmerGrid format in file `zzz`, the New Project screen will select and load this file. ElmerGUI will mesh your geometry. You should obtain your mesh and may check `Model Summary . . .` that it consists of zzz elements. Your mesh should look like as shown in figure 1.3

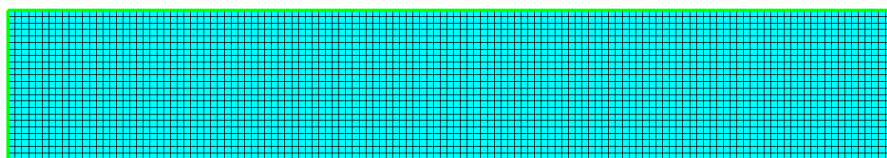


Figure 1.3: Mesh

After we have the mesh we start to go through the Model menu from the top to bottom. In the Setup we choose things related to the whole simulation such as file names, time stepping, constants etc.

zzz The simulation is carried out in 2-dimensional Cartesian coordinates.

zzz 2nd order bdf time stepping method is selected with zzz steps and with step size of zzz seconds.

zzz Every menu selection section must be revised for each tutorial. These examples show the proper format and typical content.

Model

Setup

Simulation Type = Transient

Steady state max. iter = 20

Time Step Intervals = 200

Gravity = 0 -1 0 9.82

Apply

In the equation section we choose the relevant equations and parameters related to their solution.

zzz In this case we'll have one set of equations (named "Natural Convection") which consists of the heat equation and of the Navier-Stokes equation.

When defining Equations and Materials it is possible to assign to the bodies immediately, or to use mouse selection to assign them later. In this case we have just one body and therefore its easier to assign the Equation and Material to it directly. It is important to select the convection to be computed since that couples the velocity field to the heat equation.

zzz The system may include non-linear iterations of each equation and steady state iterations to obtain convergence of the coupled system. It is often a good idea to keep the number of non-linear iterations in a coupled case low. Here we select just one non-linear iteration for both equations.

For the linear system solvers we are happy to use the defaults. One may however, try out different preconditioners (ILU1, . . .) or direct Umfpack solver, for example.

zzz Every menu selection section must be revised for each tutorial. These examples show the proper format and typical content.

```
Model
  Equation
    Name = Natural Convection
    Apply to Bodies = 1
    Heat Equation
      Active = on
    Add
    OK
```

The Material section includes all the material parameters. They are divided into generic parameters which are direct properties of the material without making any assumptions on the physical model, such as the mass. Other properties assume a physical law, such as conductivities and viscosity.

zzz Discuss which materials are used, why they are used, and any interesting details.

zzz Every menu selection section must be revised for each tutorial. These examples show the proper format and typical content.

```
Model
  Material
    Apply to Bodies = 1
    Material library
      Water (room temperature)
    General
      Reference Temperature = 293
    Add
    OK
```

A Body Force represents the right-hand-side of a equation. It is generally not a required field for a body. zzz In this case, however, we apply the buoyancy resulting from heat expansion as a body force to the Navier-Stokes equation.

zzz Every menu selection section must be revised for each tutorial. These examples show the proper format and typical content.

```
Model
  Body Force
    Name = Buoyancy
    Apply to Bodies = 1
    Navier-Stokes
      Boussinesq = on
    Add
    OK
```

Initial conditions should be given to transient cases, and probably are not needed for steady state solutions.

zzz In this case we choose a constant Temperature field and an small initial velocity that initializes the symmetry break.

zzz Every menu selection section must be revised for each tutorial. These examples show the proper format and typical content.

```
Model
  Initial Condition
    Name = Initial Guess
    Heat Equation
      Temperature = 293
    Navier-Stokes
      Velocity 1 = 1.0e-9
      Velocity 2 = 0.0
```

Only one boundary condition may be applied to each boundary and therefore all the different physical BCs for a boundary should be grouped together.

zzz In this case the Temperature and Velocity. The side walls are assumed to be adiabatic.

zzz Every menu selection section must be revised for each tutorial. These examples show the proper format and typical content.

Model

```
BoundaryCondition
  Name = Bottom
  Heat Equation
    Temperature = 293.5
  Navier-Stokes
    Velocity 1 = 0.0
    Velocity 2 = 0.0
  Add
  New

  Name = Top
  Heat Equation
    Temperature = 293
  Navier-Stokes
    Velocity 1 = 0.0
    Velocity 2 = 0.0
  Add
  OK
```

The conditions may also be assigned to boundaries in the Boundary condition menu, or by clicking on each boundary with the mouse. Here we use the latter approach as that spares us of the need to know the indexes of each boundary.

zzz Every menu selection section must be revised for each tutorial. These examples show the proper format and typical content.

Model

```
Set boundary properties
  Choose Bottom -> set boundary condition Bottom
  Choose Top -> set boundary condition Top
  Choose Sides -> set boundary condition Sides
  OK
```

For the execution ElmerSolver needs the mesh files and the command file. We have now basically defined all the information for ElmerGUI to write the command file. After writing it we may also visually inspect the command file.

Sif

```
Generate
Edit -> look how your command file came out
```

Before we can execute the solver we should save the files in a directory. The ElmerGUI project includes all the files needed to restart the case.

File

```
Save Project
```

After we have successfully saved the files we may start the solver.

Run

```
Start solver
```



A convergence view automatically pops up showing relative changes of each iteration.  
When there are some results to view we may start the postprocessor also.

```
Run  
Start ParaView
```

## Results

Due to the number of the time steps the simulation may take around zzz minutes.

You may inspect the results with Paraview or with ElmerVTK.

zzz In Figure 1.4 the obtained temperature distribution is presented.

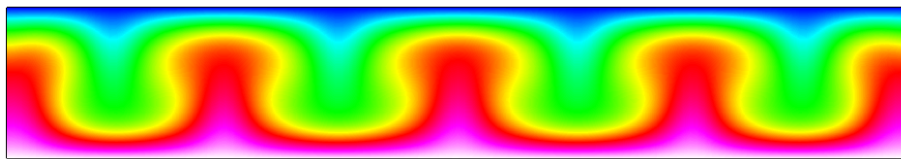


Figure 1.4: zzz Temperature distribution at 260 s.

### zzz Extra task:

zzz If you have time you may try to solve the case with different parameters.

# Index

ElmerGUI, 4

FlowSolve, 4

HeatSolve, 4

*zzz* Solver, 6

*zzz.xml*, 6